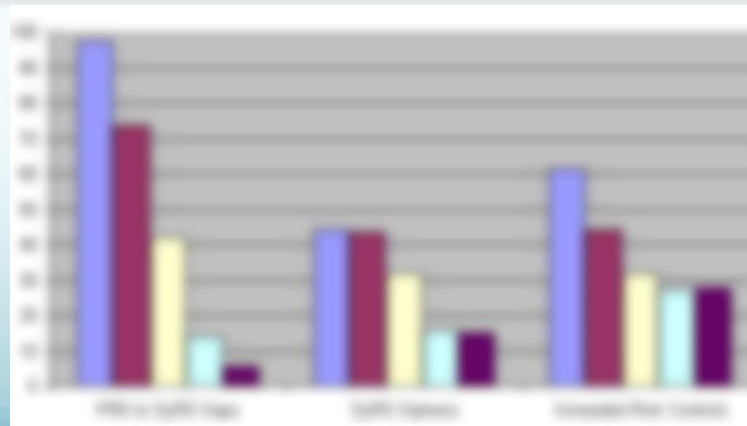


*Metrics Dashboard™* is an IBM® DOORS® accelerator product from  
River North Solutions



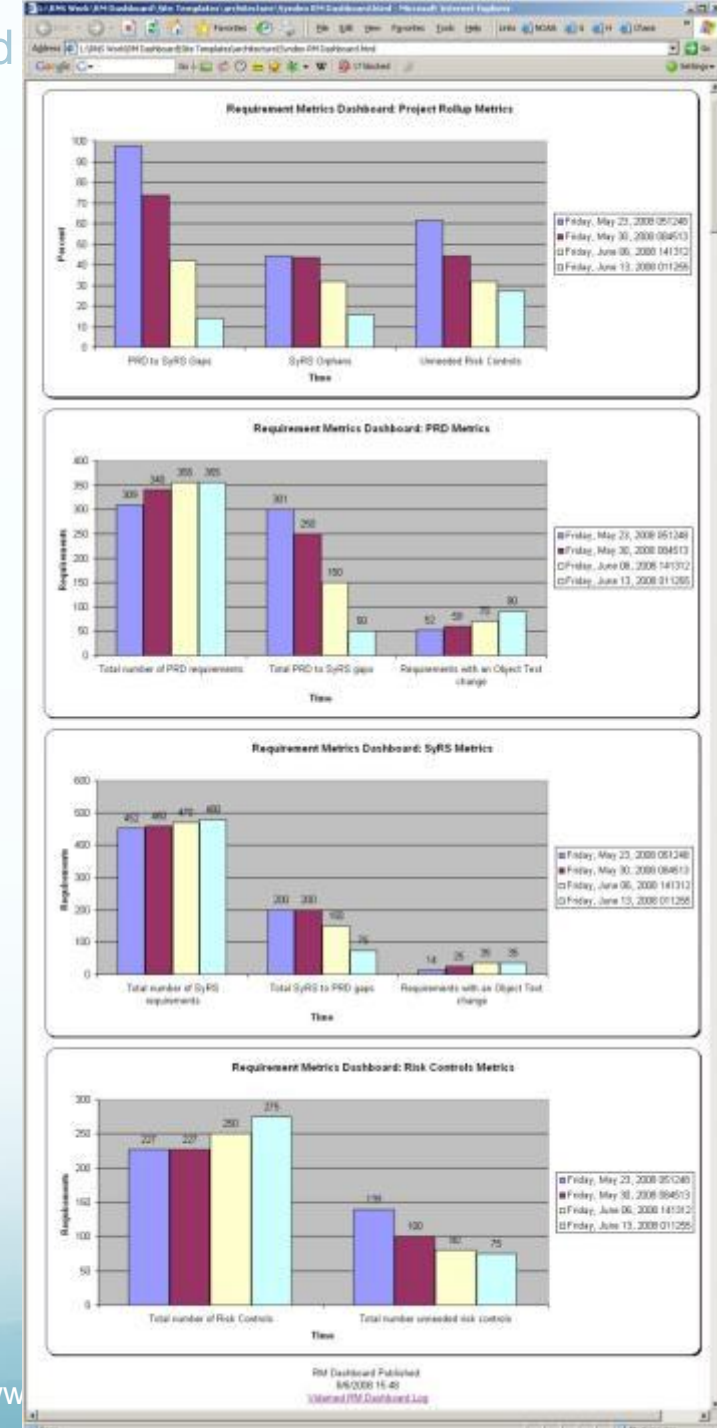
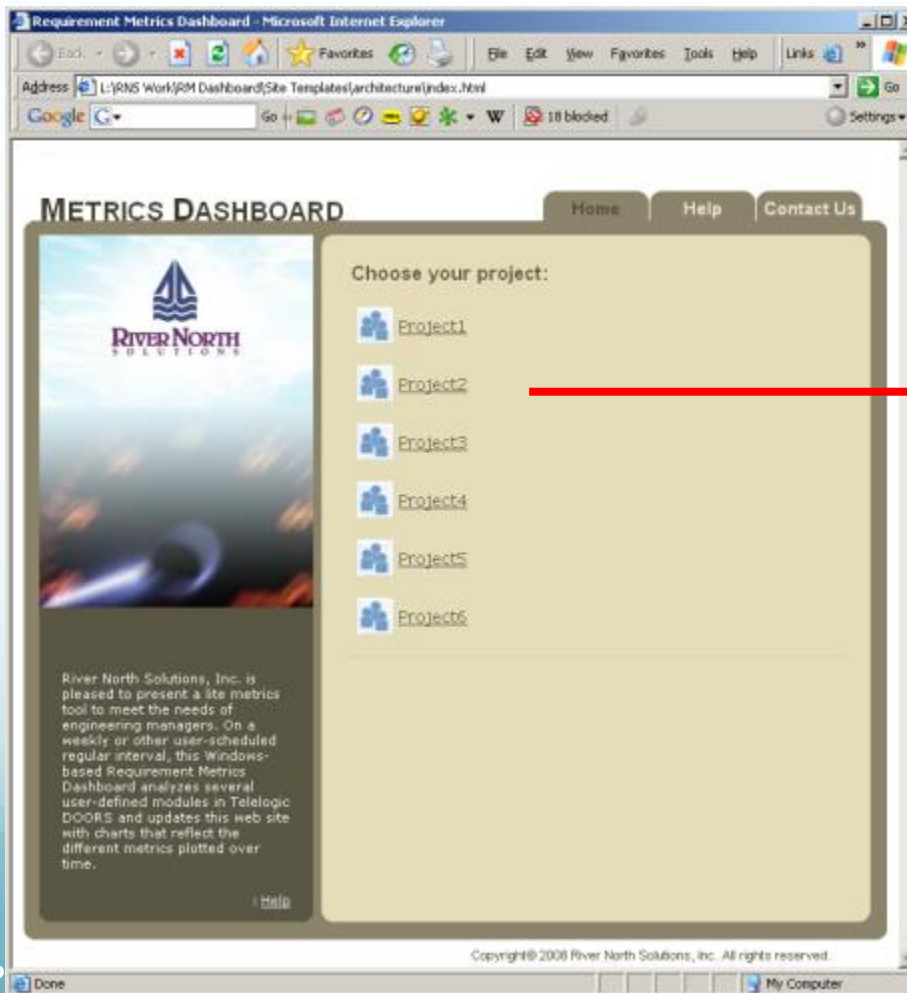
# *Metrics Dashboard™* for DOORS

V1.3



# Overview

- Dashboard Website Displaying Projects Whose Metrics Can Be Viewed



# Metrics Dashboard Overview

- Runs regularly as a Windows scheduled task
- Analyzes 4 DOORS modules:
  - For Example:
    - Product Requirements Document
    - System Requirements Spec
    - System Design Spec
    - Validation Test Spec
- Updates charts containing metrics data
- Publishes charts to a web site
- Unattended operation
- Metrics consumers navigate to web site – no software interaction necessary

Windows  
Scheduler

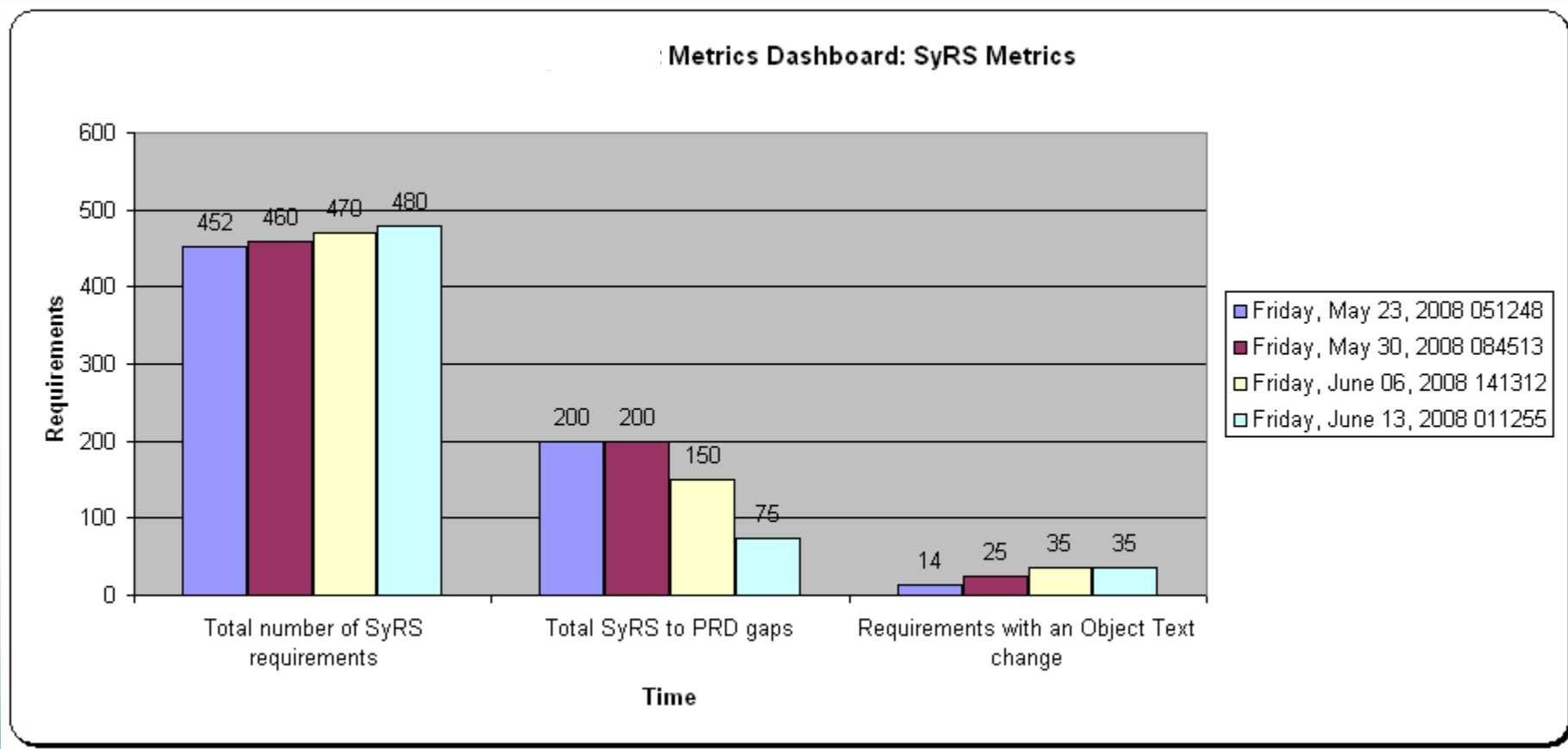


Dashboard Website Home Page



# Interpreting Dashboard Metrics

- Example: System Level Metrics



# Interpreting Dashboard Metrics

- Example: System Level Chart
  - Example metric: Total number of system requirements:
    - System requirement growth
  - Example metric: Total orphan system requirements:
    - System requirements not traced up to product level
    - Less is better, goal is zero
  - Example metric: Total number of objects with a particular status:
    - Approved vs. Pending Approval
    - Less Pending Approval is better

# RMD Overview – Dashboard Components

## Company Configuration Console

Requirement Metrics Dashboard - Company Configuration Console

General Setup | About |

**Paths**

**Requirement Metrics Dashboard Log Folder:**  
Set to location to which web site users have access. Suggest using same location as where web site files are stored. Each project will have uniquely-named log file at this location.

C:\data\yms\RMD\Log\ [Browse]

**Data Series and Web Page Backup Folder:**  
Set to location that the RMD process running on this machine always has access to, typically a network shared drive. A folder for each project will be created below this location.

C:\data\yms\RMD\Backups [Browse]

**Web Page Publish Folder:**  
Set to network path to server hosting RMD web site. Location this path represents should contain the index.html file for the RMD website.

C:\data\yms\RMD\Website [Browse]

**Path to Dashboard DXL file:**  
Set to location of Dashboard.dxl, ideally in a central DXL script repository (barring that, locate on this machine). This file must be consistently accessible by RMD process running on this host.

\\testbed2\c:\data\DOORS\dxl\adins\RiverNorth\RMD\Dashboard 2.964.dxl [Browse]

[Switch to Admin Console] [Save] [Close]

## Administrator Console

Requirement Metrics Dashboard - Administrator Console

General Setup | [DOORS Setup] | [Run the Dashboard] | [Data Series Actions] | [Project Log] | [About]

Project Name: RMD L2S RP 1

Paths Set with Company Configuration Console

Requirement Metrics Dashboard Project Log Path: C:\data\yms\RMD\Log\RMD L2S RP 1 RMD Dashboard Log.txt

Data Series and Web Page Backup Path: C:\data\yms\RMD\Backups

Web Page Publish Path: C:\data\yms\RMD\Website

**Scheduling**

Create Default Task: [Create Default Task]

Edit Task: [Edit Task]

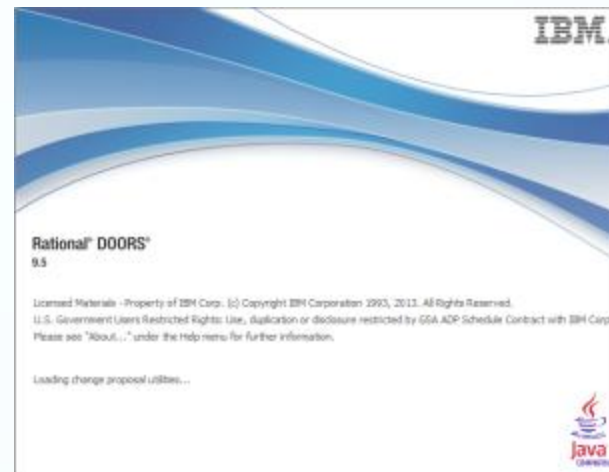
**Migrate from Another Instance of RMD**

Migrate: [Migrate]

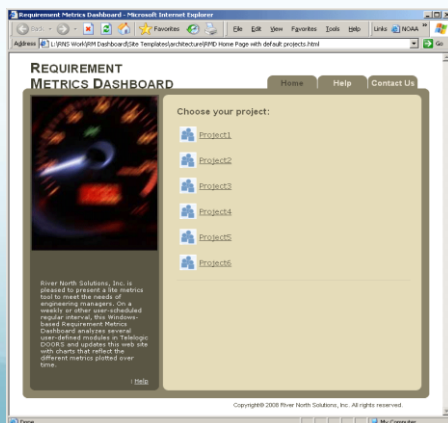
Console

The Requirement Metrics Dashboard Administrator Console is ready 8:29:36 PM  
Backed up data series found at C:\data\yms\RMD\Backups\RMD L2S RP 1 8:29:36 PM  
Dashboard Log file found at C:\data\yms\RMD\Log\RMD L2S RP 1 RMD Dashboard Log.txt 8:29:36 PM  
Synchronizing for Dashboard Log file 8:29:36 PM

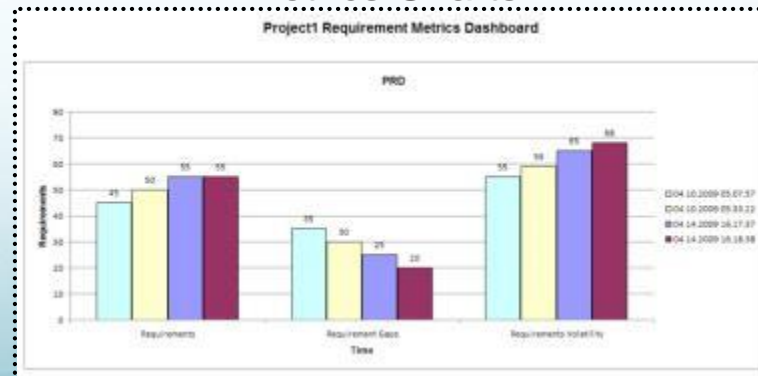
## DOORS



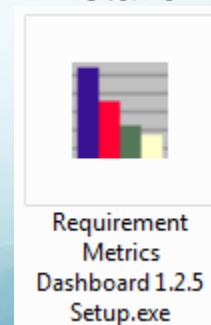
## Dashboard Website



## Metrics Charts



## Installer

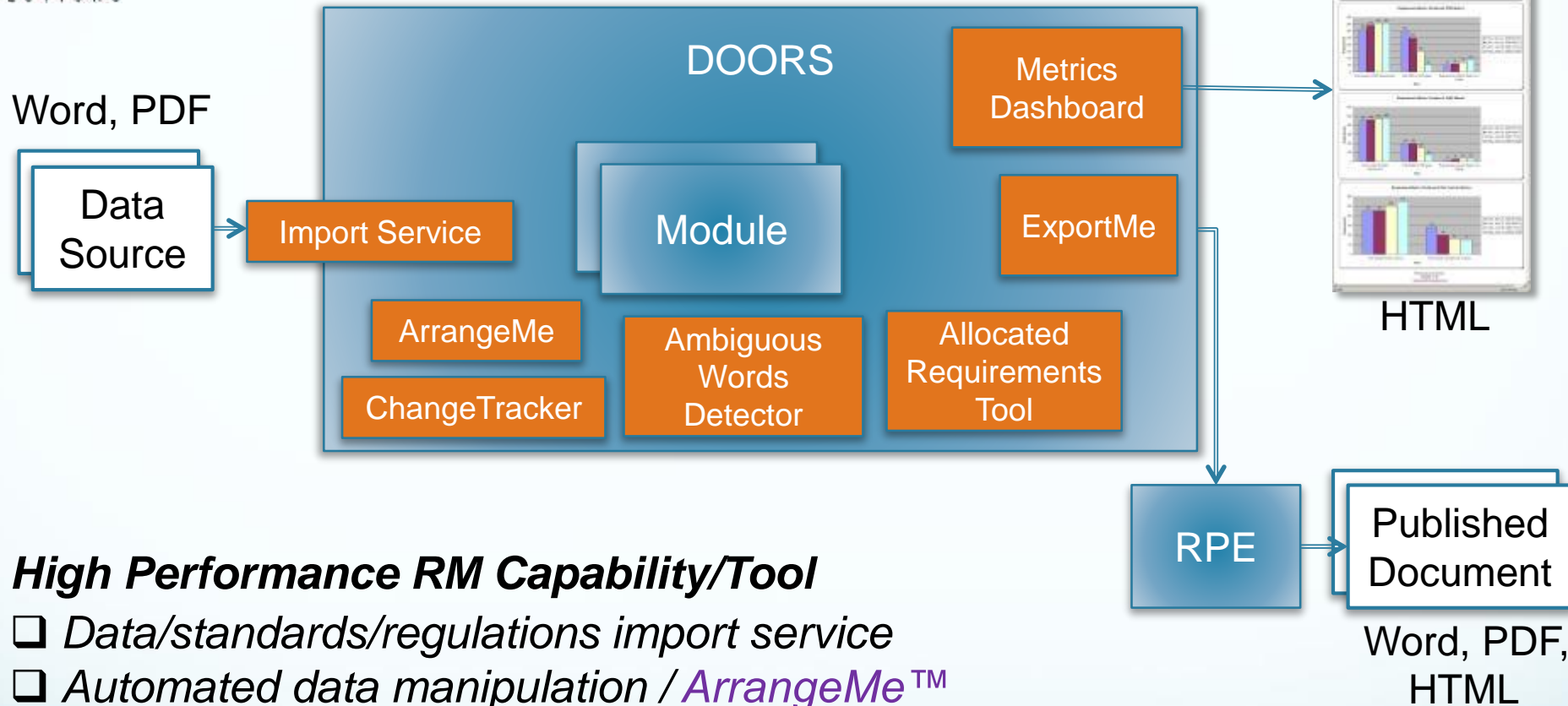


## Windows Scheduler





# River North Accelerator Tools for Requirements Management & Document Publishing



## High Performance RM Capability/Tool

- ☐ Data/standards/regulations import service
- ☐ Automated data manipulation / ArrangeMe™
- ☐ Boost requirement quality, reduce churn / Ambiguous Words Detector™
- ☐ Automated, simplified, consistent document publishing / ExportMe™
- ☐ Monitor leading indicator trends / Metrics Dashboard™
- ☐ Display revision markup using rich text / ChangeTracker™
- ☐ Reuse requirements / Allocated Requirements Tool™

# River North Profile – Industries/Clients\*, Products

- Aerospace & Defense
  - Aerojet Rocketdyne
  - Boeing
  - Collins Aerospace
  - Crane Aerospace
  - LMCO-NASA
  - NASA JPL
  - Northrop Grumman
- Energy
  - NuScale Power
  - Sandia National Labs
  - Westinghouse Nuclear
- Automotive
  - Ford Motor Company
  - Honda Motor Company
  - Johnson Controls
- Medical Device
  - Ameda
  - Ascensia Diabetes Care
  - Baxter Healthcare
  - Bayer Healthcare
  - Eli Lilly
  - Hospira
  - J&J Vision
  - Roche Diagnostics
  - St. Jude Medical (Abbott)
- Semiconductor
  - NXP Semiconductors
- Transportation
  - Ansaldo STS
  - Bombardier Transportation
  - GE Transportation
- Telecommunications
  - Comcast
  - Motorola Solutions
- Industrial
  - Chamberlain
  - HP Enterprise Services

## DOORS Classic Accelerator Products from River North

- *Ambiguous Words Detector™ (AWD)* – boosts requirement quality by automatically detecting ambiguous words in DOORS
- *ArrangeMe™* – automated DOORS data manipulation/movement
- *Requirement Metrics Dashboard™ (RMD)* – automated metrics production for DOORS
- *ChangeTracker™* – revision markup displayed using rich text in DOORS
- *ExportMe™* – document publishing automation taken to a new level in DOORS
- *Allocated Requirements Tool™ (ART)* – facilitates requirement reuse in DOORS

### Contact Information

[www.rivernorthsolutions.com](http://www.rivernorthsolutions.com)  
[info@rivernorthsolutions.com](mailto:info@rivernorthsolutions.com)



\* Partial List



# For More Information...

- *Metrics Dashboard*™ can be customized to suit your organization's needs
- Contact Bob Parro at [bparro@rivernorthsolutions.com](mailto:bparro@rivernorthsolutions.com)